



POOL MARKET RIGHT

GRATING

for swimming pools

ARCO 33 & 35

GRATING FOR SWIMMING POOLS

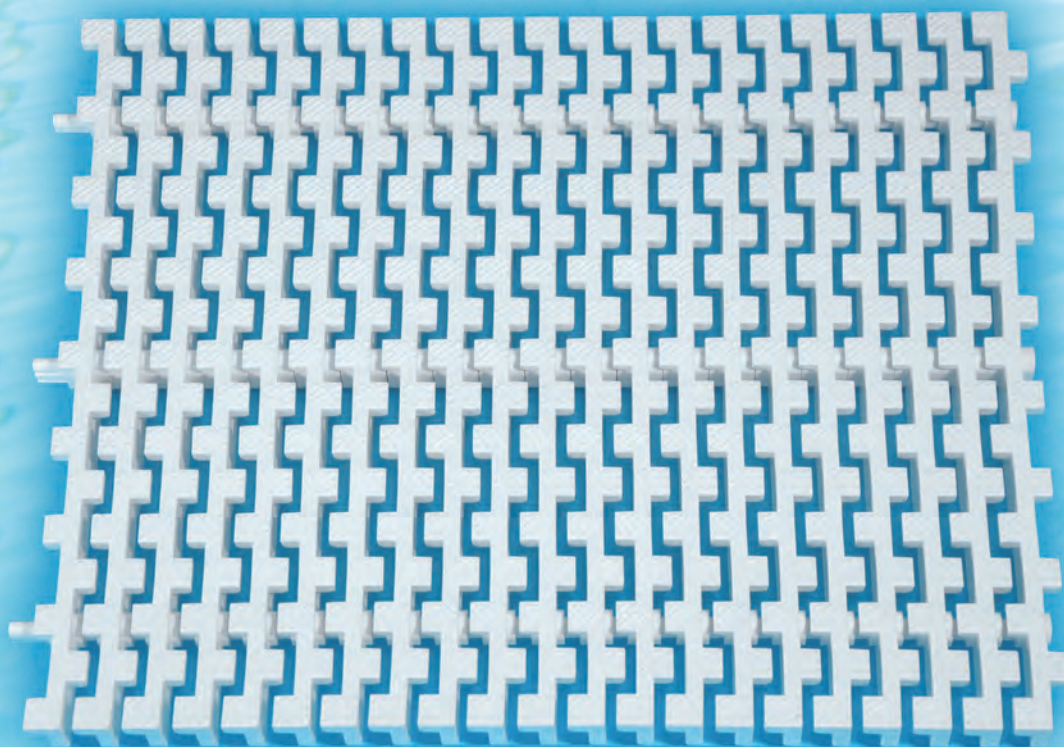
- Material: polypropylene
- Standard colours: white, beige
- Other colours only for orders in excess of 50 m with surcharge

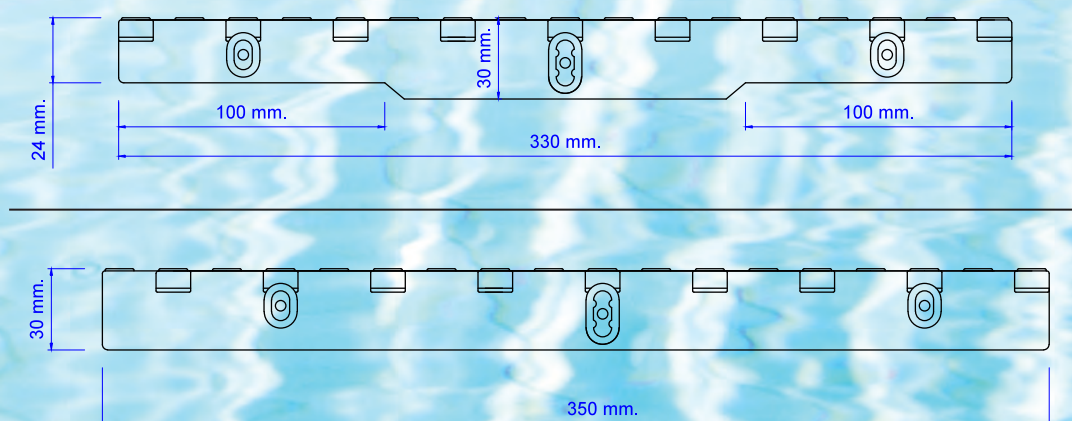
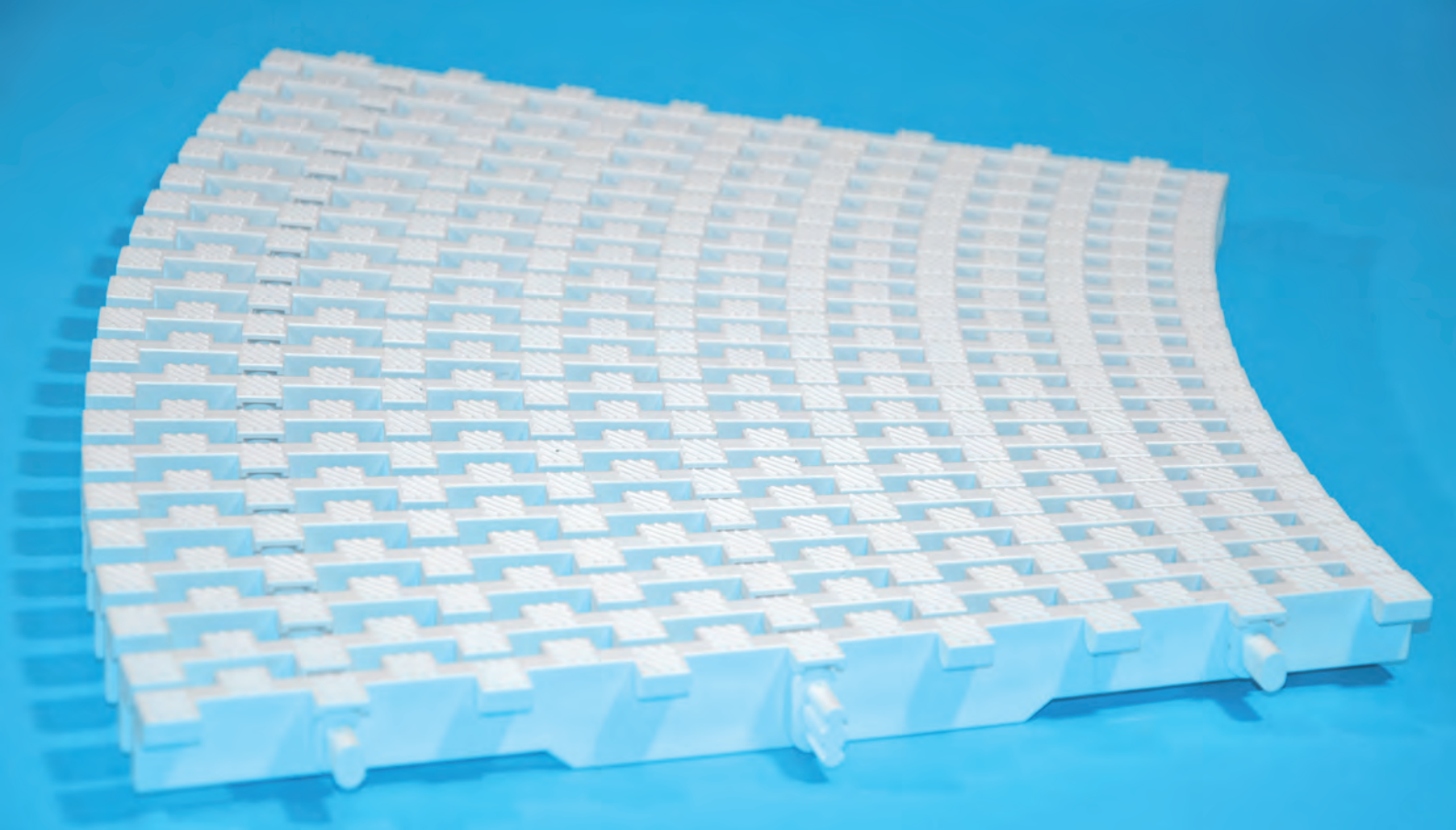
Technical data:

ARCO	Width in mm	Height in mm	Model with 3 pivots	Curve	Packaging
33	250 - 330	24 at the ends 30 in the centre	Single slats with push-in connection	No	Cardboard box 5 m
33 C	250 - 330	24 at the ends 30 in the centre	Single slats with push-in connection	Yes, $r \geq 80$ cm	Cardboard box 5 m
35	250 - 350	30 constant	Single slats with push-in connection	No	Cardboard box 4 m
35 C	250 - 350	30 constant	Single slats with push-in connection	Yes, $r \geq 80$ cm	Cardboard box 4 m

Advantages:

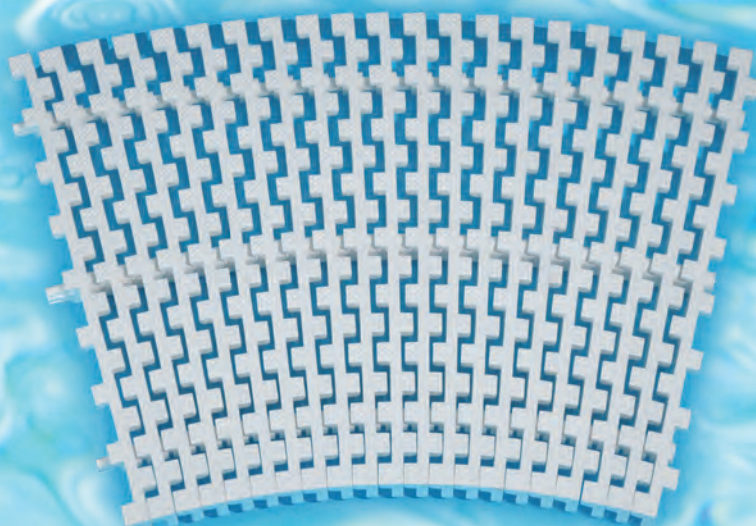
- Our extremely resistant polypropylene material guarantees the very best quality and durability.
- The single slats are easily exchangeable.
- Treated against ultraviolet rays and very durable.
- Resistant to sea water, chlorinated water + temperatures up to 60° C.
- Model 33 C and 35 C with flexible form can be inserted into any curved channel and are compatible with models 33 and 35 for straight areas.
- Thanks to the gaps in both directions, excellent drainage and a dry pool border are guaranteed.
- Tested for use in wet areas with bare feet according to the German DIN 51097 group C anti-slip standard.





Curves:

With our flexible ARCO 33C and 35C models it is possible to create curves with radiuses up to 60 cm thanks to the design, which includes shorter external pivots, and without increasing the external opening between the slats over the required 8 mm. This model makes it easier and less costly to create curves, with the advantage that it can also be inserted into straight channels of the same grating with 3 fixed pivots.



MR 24, 25 & 33

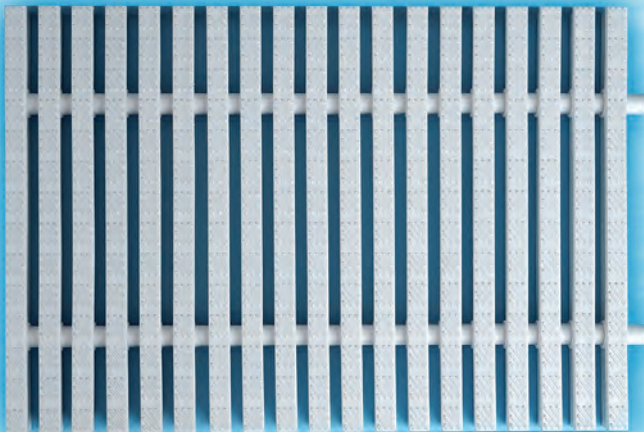


GRATING FOR SWIMMING POOLS

- Material: polypropylene
- Standard colours: white, beige
- Other colours only for orders in excess of 50 m with surcharge

Technical data:

MR	Width in mm	Height in mm	Design with 2 pivots	Curve	Packaging
24	155 - 240	24 constant	Single slat with push-in connection	Yes, $r \geq 60$ cm with surcharge	Cardboard box 7 m
25	155 - 250	24 constant	Single slat with push-in connection	Yes, $r \geq 60$ cm with surcharge	Cardboard box 7 m
33	250 - 330	24 at the ends 30 in the centre	Single slat with push-in connection	Yes, $r \geq 100$ cm with surcharge	Cardboard box 5 m

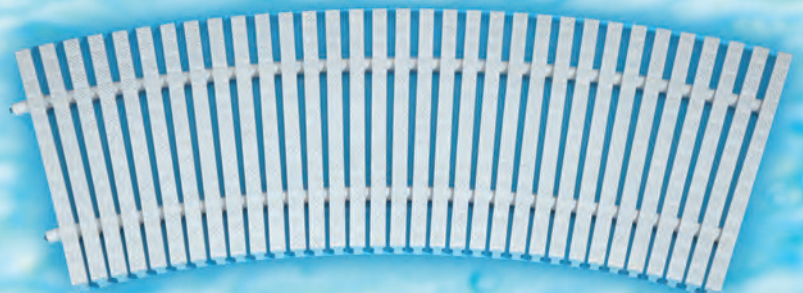


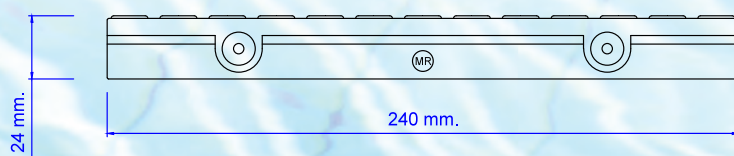
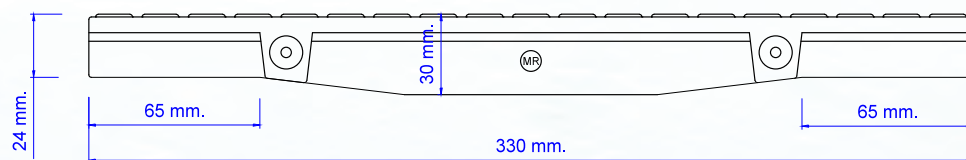
Advantages:

- Our extremely resistant polypropylene material guarantees the very best quality and durability.
- The single slats are easily exchangeable.
- Treated against ultraviolet rays and very durable.
- Resistant to sea water, chlorinated water + temperatures up to 60° C.
- The special diagonal relief of our cover gratings prevents the water from flowing over the channel and provides the maximum safety for bathers.
- Tested for use in wet areas with bare feet according to the German DIN 51097 group C anti-slip standard.

Curves:

Our plastic MR gratings are suitable for curves of all kinds. By inserting spacers between the outer connecting pins in the slats, curves with a radius up to a maximum of 2 m can be achieved. For tighter curves the radius can be lowered to 60 cm by cutting the inner connecting pins on the slats. The grating sections are then connected by 2 stainless steel bars passing through the inside of the ducts and fixed with 2 nuts at both ends. Every 1 m-long section can be inserted into the next so that no join is evident.

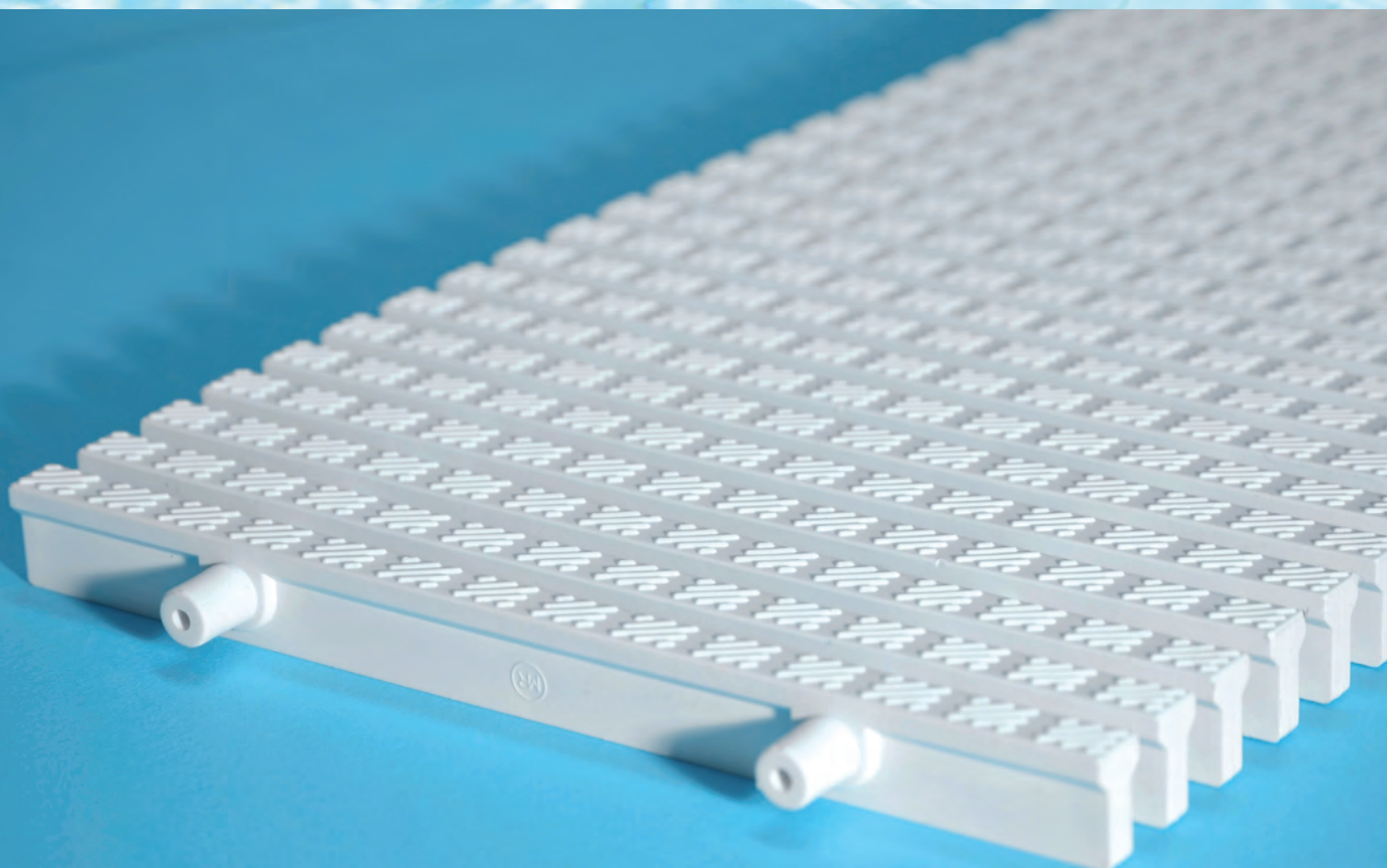




1 m fixed elements:

If specifically requested, we can also supply grating sections of 1 m in length held together by 2 stainless steel bars passing through the inside of the ducts and fixed with 2 nuts at both ends. Every 1 m-long section can be inserted into the next so that no join is evident.

This system makes cleaning and removal of the grating much easier. For curved grating this option is necessary and already included in the price.



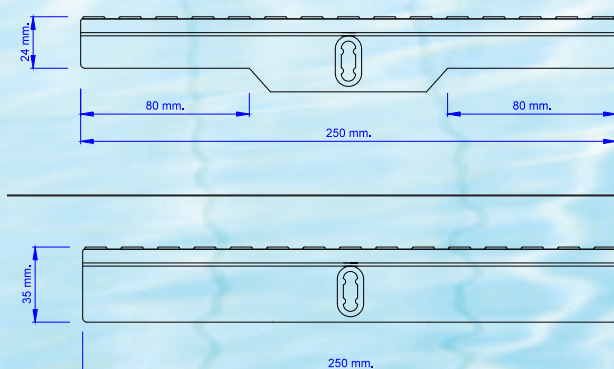
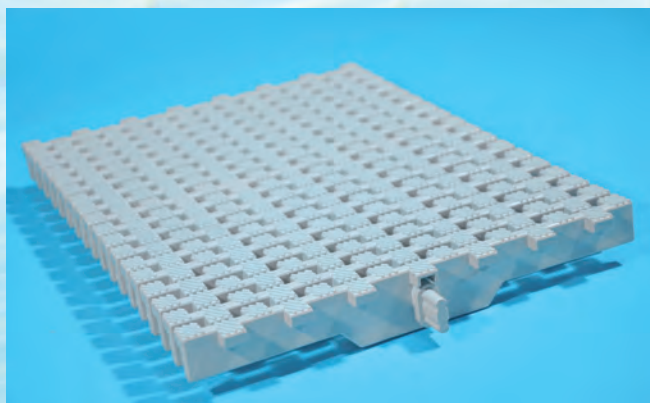
ARCO 25 & 25S

FLEXIBLE GRATING

- Material: polypropylene
- Standard colours: white, beige
- Other colours only for orders in excess of 50 m with surcharge

Technical data:

ARCO	Width in mm	Height in mm	Model with 1 central pivot	Curve	Packaging
25	140 - 250	24 at the ends 35 in the centre	Single slat with push-in connection	Yes, $r \geq 60$ cm	Cardboard box 5 m
25 S	100 - 250	35 constant	Single slat with push-in connection	Yes, $r \geq 60$ cm	Cardboard box 5 m

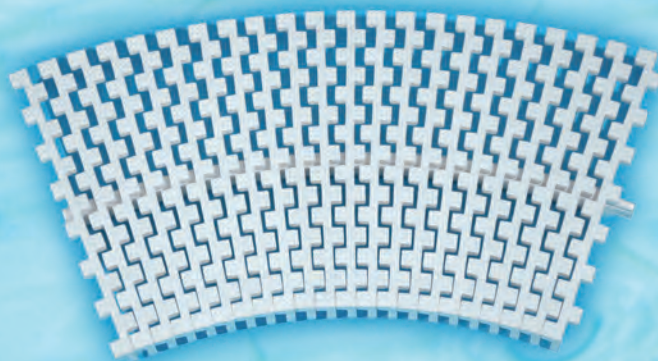


Advantages:

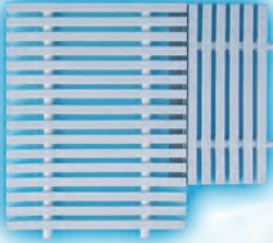
- Our extremely resistant polypropylene material guarantees the very best quality and durability.
- The single slats are easily exchangeable.
- Treated against ultraviolet rays and very durable.
- Resistant to sea water, chlorinated water + temperatures up to 60° C.
- The exclusive flexible form can be inserted into any curved or straight channel.
- Thanks to the gaps in both directions, excellent drainage and a dry pool border are guaranteed.
- Tested for use in wet areas with bare feet according to the German DIN 51097 group C anti-slip standard.

Curves:

With our ARCO 25 model it is possible to create curves with radiuses up to 60 cm thanks to the design, which includes only one central pivot, and without increasing the external opening between the slats over the required 8 mm. This model makes it easier and less costly to create curves.

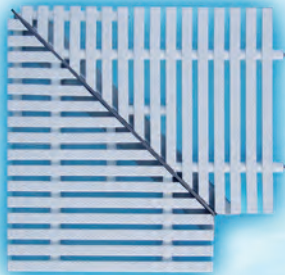


CORNER SOLUTIONS:



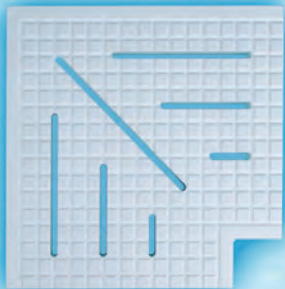
Grating installed at right angles:

Grating sections can easily be installed at 90° angles as shown in the picture. An L-shaped bracket in stainless steel is used as a support for the spillway channel enabling the grating to be laid at right angles.



Herringbone corners:

For our MR channel grating sections up to 33 cm wide we can supply bevelled corners to form any angle. They are reinforced in the centre with a stainless steel profile.



Corian corners:

For luxury pools we can supply corners made to measure from Corian, with an anti-slip surface and holes for water drainage.

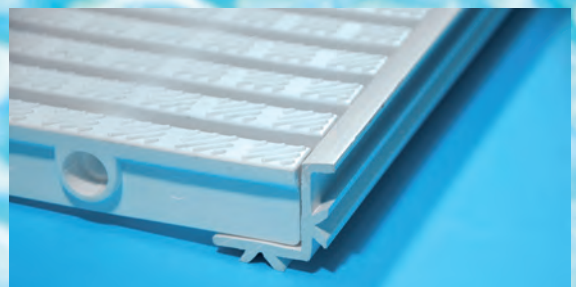


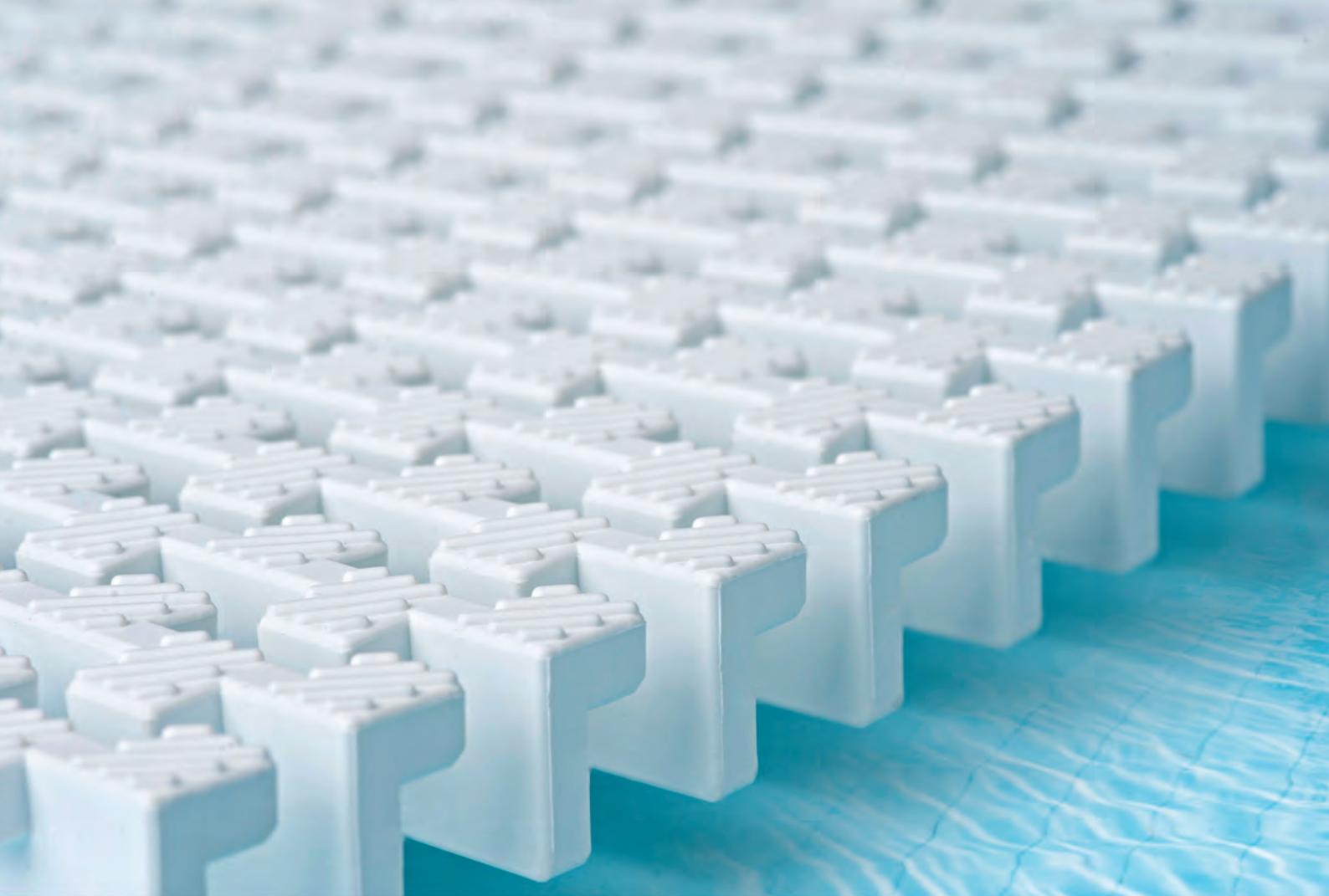
Plastic laminate corners:

We also supply corners cut to any angle made from plastic laminate with an anti-slip surface and holes for water drainage. Made from 14 mm-thick laminate plating with adjustable feet in stainless steel.

PVC angular profiles:

On request we can also supply PVC angle profiles (available in lengths of 2500 mm) in white colour as support frames for our grating sections.





www.pool-market.it



POOL MARKET RIGHI

Via Stretta,1 - 39040 ORA (BZ) ITALY

T +39 0471 27 24 43 F +39 0471 81 19 29 info@pool-market.it